

NEWS HKS COMMUNIQUE

2015 **9**



NEW RELEASE

- F-CON D P1
- TURBO TIMER PUSH START type0 P2

NEW LINE-UP

- GT SUPERCHARGER SYSTEM (GTS7040 Pro Kit)
 - ZF1 (CR-Z) P3
- Touring SPEC-L LDA-DK5FW (CX-3) P4
- S-style L AVU65W (HARRIER HYBRID) / KE2FW (CX-5) P4 · 5
- MAXIV GT GSC10 (LEXUS RC350) P5

INFORMATION

- Product Compatibility for New Vehicles (Sienta, Porte, and Spade) P6
- Compatibility of Suspension
 - for Impreza WRX (GDA, GGA/EJ20 00/8~07/6) P6
- PHASE 2 Data for Flash Editor for WRX STI (VAB/EJ20 14/8~) P6

NEW RELEASE



F-CON D

KDH2##V (HIACE) / KE2#W (CX-5)

F-CON D, The device to extract diesel engine performance.

Product Outline

- This product is compatible with Hiace 200 series type 3 and 4/Mazda clean diesel engines(CX-5). This product can control the fuel of piezo-injector diesel turbo engines.
- The engine output increases up to approximately 25ps(1KD-FTV),21ps(CX-5). The difference is noticeable right after stepping on the accelerator.

Features

- There are 3 modes that can be selected for appropriate conditions using the provided switch.
 - Stock Mode: Stock Control
 - Mode 1 : For street driving focusing on the output improvement at the mid speed range.
 - Mode 2 : For the output improvement at all speed range.
- Not only the engine output, but also the torque can be improved. The time to reach the target speed can be shortened.
- The waterproof & heat resistance design enables the unit to be installed in the engine bay safely.

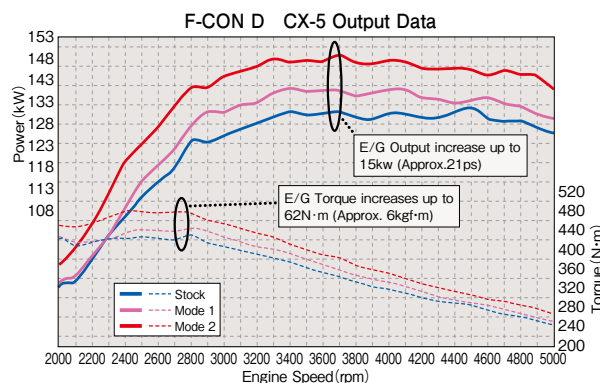
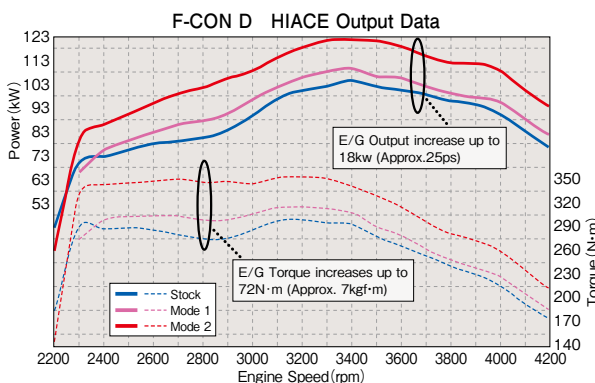


Kit Parts

- Main Unit
- Installation Bracket
- Harness
- Short Parts
- Switch

Installation

No wiring modification is required. It is simply connected by a coupler.



F-CON D ECO-TEST

1KD 3000 Diesel (Model: KDH206V)	Fuel Efficiency
F-CON D ON(Mode2) Driving Distance: 627.5km Fuel Consumption: 51.3L	12.2km/L
Stock Vehicle Driving Distance: 631km Fuel Consumption: 49.2L	12.8km/L

*These are the results of the in-house tests.

SH-VPTS 2200 Diesel (Model: KE2FW)	Fuel Efficiency
F-CON D ON(Mode2) Driving Distance: 627.7km Fuel Consumption: 33.7L	18.6km/L
Stock Vehicle Driving Distance: 622.5km Fuel Consumption: 32.5L	19.2km/L

*These are the results of the in-house tests.

Product	Vehicle	Model	Engine	Model Year	Code No.	Remarks
F-CON D	Hiace / Regius Ace	KDH20##	1KD-FTV	10/07~	42007-AT001	For Type 3 & 4
	CX-5	KE2#W	SH-VPTS	12/02~	42007-AZ001	

TURBO TIMER PUSH START type0

The Industry's First!! *Based on HKS' internal research.

Turbo Timer for the vehicles equipped with the push-start ignition.

Product Outline

1. Available for the vehicles equipped with the push-start ignition.

Recently, the number of vehicles equipped with the push-start ignition increased. HKS has released Turbo Timer for those vehicles to protect the turbocharger and/or engine. The timer functions by connecting to the CPU controlling the body that differs to the key cylinder type.

2. Unity of Design

The design and product structure are the same as the existing turbo timer. The familiar design allows easier operation. The thinner display unit increases a degree of freedom of an installing position.

3. Handbrake Sensor Safety Circuit

Sensing the handbrake's condition prevents the vehicle from moving while Turbo Timer is working.



Functions

- **Timer Function** : Manual 1 & 2 Mode (enables to set the after-idling time.) Set time: 0~10mins (at the interval of 10 sec)
- **Battery Voltage Indicator** : Indication of the battery voltage, peak value, and warning function's ON/OFF status.
- **Automatic Door Lock Function** : The door is locked by Turbo Timer since the key-lock does not function during the after-idling. This function is optional. Set time: 1~10 sec. (at the interval of 1 sec.)

Option Parts - Timer Harness

The vehicle specific Turbo Timer Harness makes the connection easier. Turbo Timer harness for Subaru is available separately. For more details, please refer to the information provided separately.

NOTE

- The factory security system will not be activated after the after-idling.
- The automatic door lock functions is to lock the door by Turbo Timer since the door cannot be locked by a key during the after-idling.

TURBO TIMER PUSH START type0

Product	Code No.	Remarks
TURBO TIMER PUSH START type0	41001-AK011	The turbo engine equipped with the push-start ignition. Application chart is available separately.

TIMER HARNESS for PUSH START type0

Product	Code No.	Remarks
TIMER HARNESS FTP-1	41003-AF007	For Subaru. For application, please see the list below.

TIMER HARNESS APPLICATION CHART(PUSH START)

Vehicle	Model	Engine	Model Year	Harness Type	Smart Key *1	Remote Key *1
SUBARU						
WRX STI	VAB	EJ20	14/08~	FTP-1	× *2	○
WRX S4	VAG	FA20	14/08~	FTP-1	× *2	○
IMPREZA WRX STI	GVB	EJ207	10/07~14/08	FTP-1	× *2	○
	GRB	EJ207	07/10~14/08	FTP-1	× *2	○
IMPREZA WRX STI A-Line	GVF	EJ257	10/07~14/08	FTP-1	× *2	○
	GRF	EJ257	09/02~14/08	FTP-1	× *2	○
IMPREZA	GH8	EJ20X	07/06~11/12	FTP-1	× *2	○
EXIGA	YA5	EJ20	08/06~09/09	FTP-1	× *2	○
FORESTER	SJG	FA20	12/11~	FTP-1	× *2	○
	SH5	FJ205	08/01~12/10	FTP-1	× *2	○
LEVORG	VMG	FA20	14/06~	FTP-1	× *2	○
	VM4	FB16	14/06~	FTP-1	× *2	○
LEGACY	BR9	EJ257	09/05~14/09	FTP-1	× *2	○
LEGACY B4	BM9	EJ257	09/05~14/09	FTP-1	× *2	○

*1. It shows if the door can be locked by a key or not after the after-idling. (The door cannot be locked by a key during the after-idling.)

*2. The smart key cannot be used after the automatic door lock function is activated. It can be used after the door is locked after the remote control key.

NEW LINE-UP



GT SUPERCHARGER SYSTEM (GTS7040 Pro Kit) ZF1 (CR-Z)

“HKS Supercharger System for Honda CR-Z” has been highly praised since it was released five years ago.

The Pro Kit is now available for higher engine output. “Over 250PS” is feasible with the upgraded engine.

An Upgrade Kit is also available for those who already installed the current kits.



Features

- HKS GTS7040 which was originally used for the Max Speed Project is included.
- Output of 157HP can be achieved with the stock I/J, and with the Fuel Upgrade kit and an engine control device, it can exceed 200HP.
- Modification of the engine is not required up to 200HP. (For high load driving such as circuit driving, it is recommended to upgrade the engine parts with HKS products.)
- Over 250PS is achievable with the upgraded engine internals.

Performance

- Output Performance... The engine output increases by approx. 60ps, and torque increases by 5kg·m compared to the stock engine!!

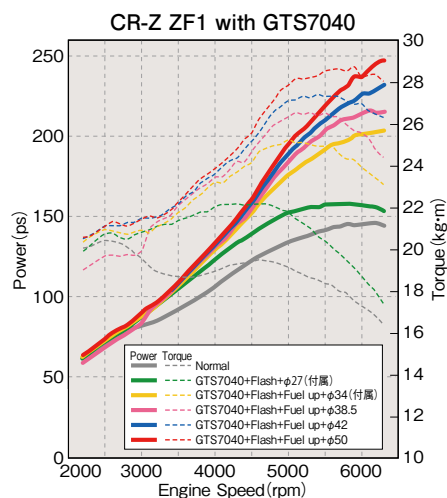
(Test Vehicle: CR-Z(ZF1) MT)

	Power	Torque
New S/C kit + Fuel up + Flash	149kW (203ps) / 6300rpm	247N·m (25.2kg·m) / 5000rpm
New S/C kit + Flash	115kW (157ps) / 5700rpm	217N·m (22.2kg·m) / 4300rpm
Normal	106kW (145ps) / 6200rpm	200N·m (20.4kg·m) / 2500rpm

*These are results of in-house test. Results may vary depending on measuring instruments.

Remarks

- The output shown in these graphs are based on our in-house tests by Dyno Jet.
- This kit's output is adjusted by the intake restrictor.
- During the tests, the $\phi 38.5\text{mm}$, $\phi 42\text{mm}$, and $\phi 50\text{mm}$ restrictors were used besides the provided $\phi 27\text{mm}$ and $\phi 34\text{mm}$ restrictors to compare the results.



Kit Parts

GT SUPERCHARGER Pro KIT

*All necessary installation parts are included in the kit. (An engine control part is not included.)



FUEL UPGRADE KIT

Kit Parts

Large Capacity Injectors
Restrictor ($\phi 34$)



	Pro kit	Upgrade	Fuel Up
Supercharger Assy	○	○	×
Supercharger Oil System	○	×	×
Supercharger Bracket	○	○	×
Suction Pipe	○	○	×
Intercooler Assembly	○	×	×
Intercooler Pipe + Blow off	○	×	×
Other hardware	○	×	×
Engine Control System	×	×	×
Restrictor	$\phi 27\text{mm}$	$\phi 27+34\text{mm}$	$\phi 34\text{mm}$

Notes Prior to Installation

- Replace the spark plugs with higher heat range. (It's recommended to use HKS Super Fire Racing M40i or higher.)
- High octane gasoline must be used.
- Since the factory washer tank must be removed to install this kit, DENSO washer tank (160200-5070) or a similar item may be required.
- Estimated installation time is 6 to 8 hours.
- The noise may exceed the local legal regulation level depending on the exhaust system used.

	Required Items
CAT	HKS or Normal
Exhaust System	HKS or Normal
Spark Plug	HKS M40i or higher
Engine Oil	HKS SUPER RACING OW-25 or 10W-35

Vehicle	Model	Engine	Model Year	Code No.	Remarks
HKS GT SUPERCHARGER Pro KIT					
CR-Z	ZF1	LEA-MF6	10/02~12/08	12001-AH008	Compatibility with ZF2 has not been confirmed. Compatible with CVT, but for more peak power, 12001-AH007 is recommended.
SUPERCHARGER UPGRADE KIT					
CR-Z	ZF1	LEA-MF6	10/02~12/08	12002-AH002	To upgrade 12001-AH001, AH004, and AH007 to 12001-AH008.
FUEL UPGRADE KIT					
CR-Z	ZF1	LEA-MF6	10/02~12/08	14007-AH003	Fuel Upgrade kit ZF1 for GTSC

Touring SPEC-L

Applicable to New Regulation enforced as of April, 2010

CX-3 (LDA-DK5FW)

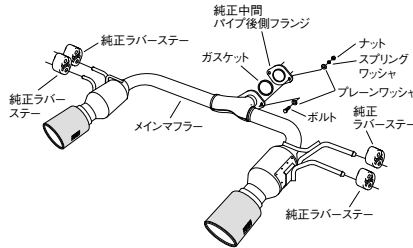
Touring SPEC-L



構成図

Code No. **31019-AZ009**

- VehicleCX-3
- Model LDA-DK5FW
- Engine S5-DPTS
- Model Year ... 15/02~



JQR No. **JQR20151118**



HKS

Remarks
For 2WD model

YouTube Movie



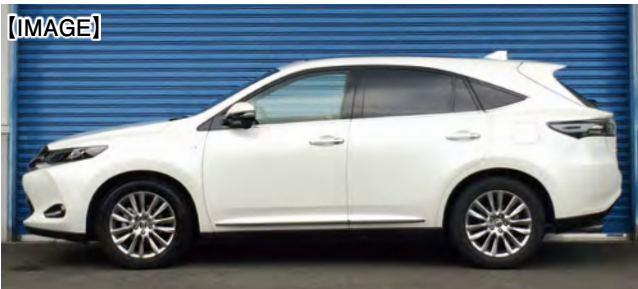
Type of Muffler	C1 (Carbon)
Main Material	SUS304
Diameter of Tip	φ94 L&R
Diameter of Mid Pipe	φ50 (*2)
Exhaust Noise Level	Stock 71dB (★55dB)
	HKS 83dB (★56dB)
Vehicle's Height with Exhaust System (* 4)	Height 200mm
	Measured Position Main pipe
Remarks	

*1 : Main material in the component figure. □ SUS304/ High quality stainless steel. ■ SUH409/ Stainless steel commonly used for stock exhaust.
 *2 : About center pipe. Diameter of center pipe is the portion that has the largest diameter. (Excluding silencer and tip.) It is the condition with stock suspension.
 *3 : Minimum road clearance between HKS muffler (Any parts included in the kit) and road surface. Therefore, it may be different from actual road clearance of the vehicle.
 The data is basically the condition with stock suspension. However, please understand that some items have data with low down spring or ride height adjustable suspension kit.
 Caution : Hook, bracket, stay may be changed without prior notice.
 ★ : Exhaust noise level at idle.

S-style L

AVU65W (HARRIER HYBRID) / KE2FW (CX-5)

ULTIMATE ALL-ROUND SUSPENSION FOR LOW-DOWN ENTHUSIAST.



HARRIER HYBRID/AVU65W



Features

- Whilst the stock suspension is made to a high quality, the instability from the high ride height and the sharp thrusts on rough surfaces have been improved whilst maintaining the good qualities of the stock suspension.
- Lowering the vehicle height by 30mm creates stylish appearance and provides higher ride quality.
- The vehicle height is adjustable and can be raised to the stock height.

Spring rate N/mm (kgf/mm)	Spring Height (mm)	Default ride height Range (High-Low)	Upper Mount	Upper Mount change	Spring rate change
F=49(5)/R=69(7)	F=250(Barrel)/R=220(Barrel)	F=-28(0~-60)/R=-29(0~-61)	F=Rubber/R=Rubber	N/A	F=Available/R=Available

Remarks	For Hybrid model.
---------	-------------------

Vehicle	Model	Engine	Model Year	Code No.	JAN Code
HARRIER HYBRID	AVU65W	2AR-FXE	13/12~	80130-AT112	4957266332252

ULTIMATE ALL-ROUND SUSPENSION FOR LOW-DOWN ENTHUSIAST.



CX-5/KE2FW



Features

- The original vehicle height is rather high, and suspension setting is vague; a driver may feel upthrust on a stepped road surfaces from rear, especially the early model. S-Style L eliminates the upthrust from rear and focuses on improving the drivability.
- The stock vehicle height is high, and its fender clearance is wide; therefore, the vehicle can be lowered by -33mm in front and -53mm in rear. The sophisticated appearance is maintained with moderate vehicle height.

Spring rate N/mm (kgf/mm)	Spring Height (mm)	Default ride height Range (High-Low)	Upper Mount	Upper Mount change	Spring rate change
F=39(4)/R=29(3)	F=300(Barrel)/R=Special	F=-33(-8~-102)/R=-53(-24~-77)	F=Rubber/R=Rubber	N/A	F=Available/R=N/A

Remarks	The vehicle height is based on the diesel / 2WD vehicle. The compatibility to the diesel/4WD & gasoline vehicles has not been confirmed, yet.
----------------	---

Vehicle	Model	Engine	Model Year	Code No.	JAN Code
CX-5	KE2FW	SH-VPTS	12/02~	80130-AZ102	4957266331996

MAXIV GT

GSC10 (LEXUS RC350)

Awesome control and comfort ride on the street for a sporty drive.

MAXIV GT

LEXUS RC350/GSC10



Features

- This product can improve handling without impairing the riding comfort even after lowering the ride height. The stability is enhanced by taking into consideration not only of the spring rate or damping force but also the stroke.
- Settings were determined to make the product having higher potential with full consideration of what are required by users. Higher basic performance of this product can enhance its application ability so it enables to support a wide range of application.

Spring rate N/mm (kgf/mm)	Spring Height (mm)	Default ride height Range (High-Low)	Upper Mount	Upper Mount change	Spring rate change
F=78(8)/R=98(10)	F=250/R=220(Barrel)	F=-9(0~-104)/R=-11(-7~-88)	F=Rubber/R=Rubber	N/A	F=Available/R=Available

Remarks	Height data is based on 'RC350 F SPORT'. Rear: Separate type.
----------------	---

Vehicle	Model	Engine	Model Year	Code No.	JAN Code
LEXUS RC350	GSC10	2GR-FSE	14/09~	80230-AT005	4957266320068



Application

Product Compatibility for New Vehicles (Sienta, Porte, and Spade)

Compatibility of the following products for Sienta Hybrid (DAA-NHP170G/1NZ-FXE+2LM 15/7~), Sienta2WD(DBA-NSP170G,172G/2NR-FKE 15/7~), Sienta 4WD(DBA-NCP175G/1NZ-FE 15/7~), Porte/Spade(DBA-NSP141/2NR-FKE 15/7~)has been confirmed.

Vehicle	Classification	Model	Engine	Model Year	SUPER HYBRID FILTER	SPARK PLUG	HYBRID SPORTS OIL FILTER	Remarks
SIENTA HYBRID	DAA-	NHP170G	1NZ-FXE+2LM	15/07~	70017-AT023	M-i	52009-AK002	
SIENTA	DBA-	NSP170G,172G	2NR-FKE	15/07~	70017-AT017	M-HL	N/A	2WD
		NCP175G	1NZ-FE	15/07~	70017-AT017	M-iL	52009-AK002	4WD
SPADE/PORTE	DBA-	NSP141	2NR-FKE	15/07~	70017-AT017	M-HL	N/A	

Compatibility of Suspension for Impreza WRX(GDA,GGA/EJ20 00/8~07/6)

Compatibility of Hipermax IV GT for Impreza WRX(GDA,GGA/EJ20 00/8~07/6) has been confirmed.
Compatibility to the applied E model is not the same for STI(GDB).

Vehicle	Model	Engine	Model Year	Series	Code No.	Remarks
IMPREZA	GDA,GGA	EJ20(TURBO)	00/8~07/06	MAX IV GT	80230-AF002	

PHASE 2 Data for Flash Editor for WRX STI(VAB/EJ20 14/8~)

Flash Editor including PHASE2 data has been delivered as of June 16, 2015.

The serial number of this new model is Ver.SB0004.302 as it shown on the package. Upgrading the former model to the current model including PHASE2 is available. For upgrading, contact the dealer where the former model was originally purchased.

memo



MAX IV GT



**for MAZDA ROADSTER (ND5RC)
coming soon!!**



LEGA MAX Premium

HKS STYLING PERFORMANCE



HKS Co., Ltd.

● Head Office

7181 Kitayama, Fujinomiya, Shizuoka 418-0192, Japan
<http://www.hks-power.co.jp/>

Unauthorized reproduction is strictly prohibited.

The applications were confirmed by July 2015.

- Prices shown in this publication are the manufacturer's suggested retail price.
- Specifications may be changed without prior notice. Printed product images shown in this publication may be different from the actual product.
- HKS will not be responsible for any damage caused by improper installation and/or installing to other inapplicable vehicles.
- The product may not be compatible with vehicles even the model and/or engine type are the same as shown in the application chart.
- Data shown in this publication are based on the in-house data prepared under certain conditions.